

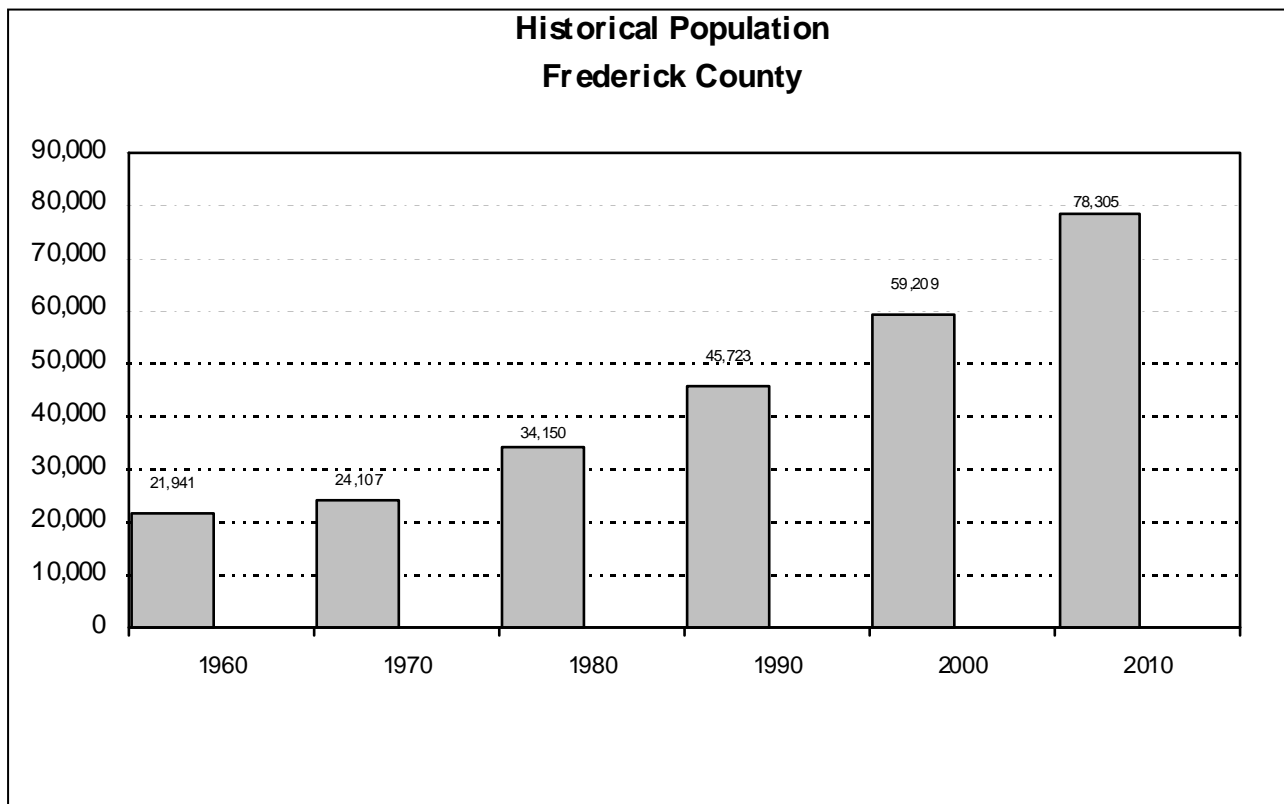
## APPENDIX II – BACKGROUND ANALYSIS AND SUPPORTING STUDIES

---

### DEMOGRAPHIC ANALYSIS

#### HISTORICAL POPULATION

Settlement of Frederick County began in the early 1700's, but it was not until 1840, that the boundary of Frederick County was established to what we know today. Frederick County supports one of the faster growth rates of population in Virginia, and the rates of growth have accelerated in recent decades. During the 1970's, the population of the County grew by as many people as in the previous seven decades combined. In 2010 the population of Frederick County was 78,305. Since 1980 Frederick County population growth averaged 29.3% per decade.



## APPENDIX II – BACKGROUND ANALYSIS AND SUPPORTING STUDIES

---

### POPULATION AND AGE DISTRIBUTION

On average, the age of people living in Frederick County is increasing. Between 1990 through 2009, the median age of the population increased from 33 in 1990 to 39 in 2009. Overall, Frederick County's population is slightly older than the Commonwealth as a whole (37.6 yrs) and the USA (37.1).

---

#### Population Distribution: Frederick County

|                |                |                |                  |                    | Percent Change  |                 |
|----------------|----------------|----------------|------------------|--------------------|-----------------|-----------------|
|                | 1990<br>Census | 2000<br>Census | 2009<br>Estimate | 2014<br>Projection | 1990 to<br>2000 | 2009 to<br>2014 |
| 0 - 4          | 6.5%           | 7.6%           | 6.4%             | 6.2%               | 52.3%           | 7.0%            |
| 5 - 19         | 22.2%          | 21.8%          | 20.4%            | 19.4%              | 26.8%           | 5.5%            |
| 20 - 24        | 4.7%           | 6.3%           | 6.1%             | 6.5%               | 73.5%           | 17.4%           |
| 25 - 44        | 31.9%          | 34.6%          | 27.8%            | 25.0%              | 40.5%           | -0.6%           |
| 45 - 64        | 24.1%          | 20.3%          | 27.5%            | 29.1%              | 9.2%            | 17.1%           |
| 65 and<br>over | 10.6%          | 9.4%           | 11.9%            | 13.8%              | 14.6%           | 28.2%           |
| Median<br>Age  | 33.4           | 37.3           | 38.8             | 39.4               |                 |                 |

---

As the median age rose, the proportion of the population in the older age groups also increased. The percentage of the population age 65 or older in Frederick County has increased from 10.6% in 1990 to 11.9% in 2009. Projections for 2014 indicate a trend of increasing numbers of people of 65 or older.

The population under the age of 18 has not increased as rapidly in recent decades. The proportion of the population under the age of eighteen in Frederick County now sits at 20%, down from 22.2% 1990. This element should be evaluated further with the release of the complete 2010 census information.

Current projections for 2014 indicate a continuation of past trend, an aging population. A major labor force category (25 – 44) is expected to have negative growth. This fact furthers enforces the need to analyze our regional labor force market to meet future employment needs.

Projections show an increase of over 6,000 individuals who are 45 and older. The school-aged segment of the population (5 – 19) is not expected to significantly increase.

## APPENDIX II – BACKGROUND ANALYSIS AND SUPPORTING STUDIES

---

### DIVERSITY

Diversity is becoming increasingly apparent in Frederick County. From 1990 to 2010, the area's population has experienced substantial increases individuals of Hispanic (over 5,000) and black ethnicity (over 3,000). The 2010 census has observed a continuation of these trends, which are reflective of greater national trends.

| Race and Ethnicity             |       |       |       |       |
|--------------------------------|-------|-------|-------|-------|
|                                | 1990  | 2000  | 2009  | 2014  |
| American Indian, Eskimo, Aleut | 0.2%  | 0.2%  | 1.0%  | 2.4%  |
| Asian                          | 0.5%  | 0.7%  | 1.4%  | 1.5%  |
| Black                          | 1.8%  | 2.6%  | 5.2%  | 7.3%  |
| White                          | 97.4% | 95.0% | 91.2% | 88.2% |
| Other                          | 0.2%  | 0.6%  | 0.4%  | 0.3%  |
| Multi-Race                     |       | 1.0%  | 0.8%  | 0.3%  |
| American Indian, Eskimo, Aleut | 0.2%  | 0.2%  | 1.0%  | 2.4%  |
| Hispanic Ethnicity             | 0.6%  | 1.7%  | 7.8%  | 12.0% |

## APPENDIX II – BACKGROUND ANALYSIS AND SUPPORTING STUDIES

---