



MEMO

To: Parks and Recreation Buildings and Grounds Committee
From: Jon Turkel, Assistant Director *JWT*
Subject: Buildings and Grounds Committee Meeting
Date: March 2, 2023

The Buildings and Grounds Committee is scheduled to meet at 10am on Tuesday March 7, 2023, in the Sherando Park Maintenance Office, 120 Park Lane, Stephens City, VA 22655. Agenda includes:

Action Items:

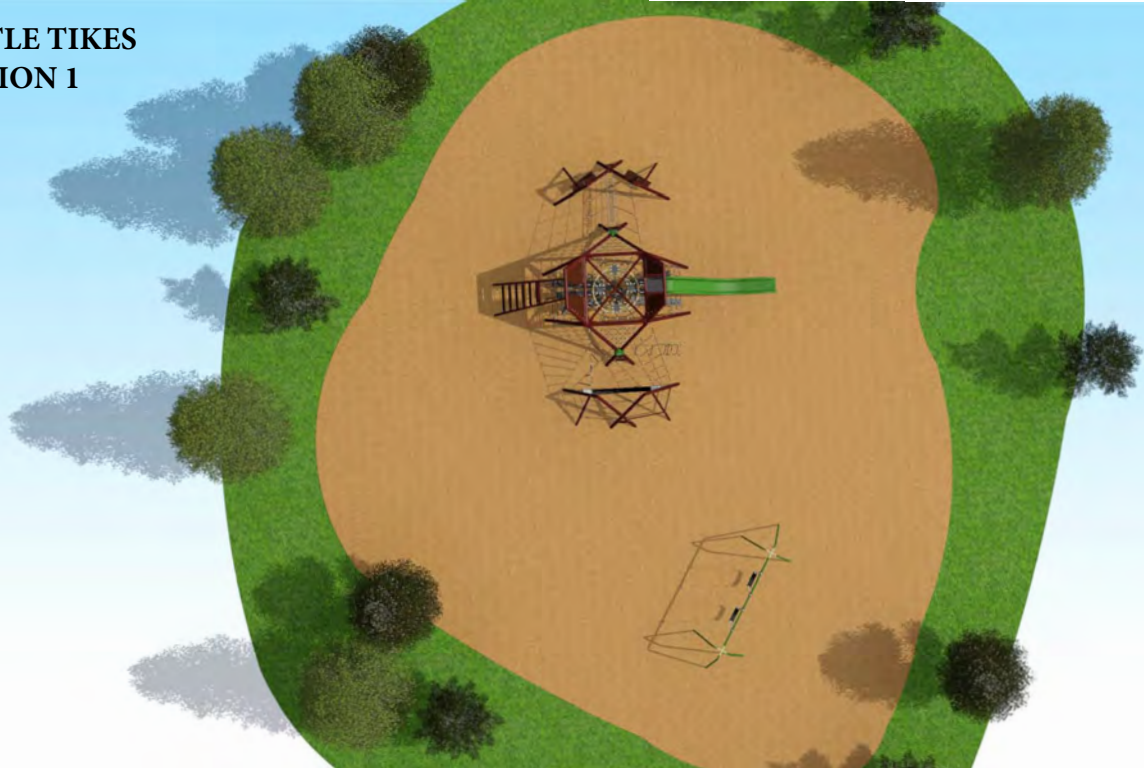
1. Sherando Park: Abex Playground Replacement
 - Staff is seeking a recommendation from the committee for selection of the replacement playground for the Abex playground. Concepts provided by vendors are attached. **(Attachment 1)**.
2. Clearbrook Park: Caboose relocation
 - Staff is seeking a recommendation to request the owner of the caboose, the National Railway Historical Society, Winchester Chapter, to pursue relocation of the caboose from the park.

Information Item:

1. Rose Hill Park: Sandy Ridge Trail
 - Museum of the Shenandoah Valley has proposed conditions for the installation of the Sandy Ridge trail. Staff is seeking guidance regarding the conditions.
2. Parks and Recreation Recognitions
3. Amphitheater Uses
 - Staff is seeking guidance on acceptable uses for the new amphitheater.
4. Sherando Pool Bath House Review
5. Project Updates

Other Business

**LITTLE TIKES
OPTION 1**





**LITTLE TIKES
OPTION 1**



**LITTLE TIKES
OPTION 1**



**LITTLE TIKES
OPTION 1**



**LITTLE TIKES
OPTION 1**



**LITTLE TIKES
OPTION 1**



**LITTLE TIKES
OPTION 1**



**LITTLE TIKES
OPTION 1**



**LITTLE TIKES
OPTION 1**

**LITTLE TIKES
OPTION 2**





**LITTLE TIKES
OPTION 2**



**LITTLE TIKES
OPTION 2**



**LITTLE TIKES
OPTION 2**



**LITTLE TIKES
OPTION 2**



**LITTLE TIKES
OPTION 2**



**LITTLE TIKES
OPTION 2**



**LITTLE TIKES
OPTION 2**



800.438-2780 - www.cunninghamrec.com



1

Frederick County (VA) Parks - Sherando Park - Abex Play Area
Proposed Play Area (Option-1) for Ages 2-5 & Up: View-3





800.438-2780 - www.cunninghamrec.com



1 Frederick County (VA) Parks - Sherando Park - Abex Play Area
Proposed Play Area (Option-1) for Ages 2-5 & Up: View-1





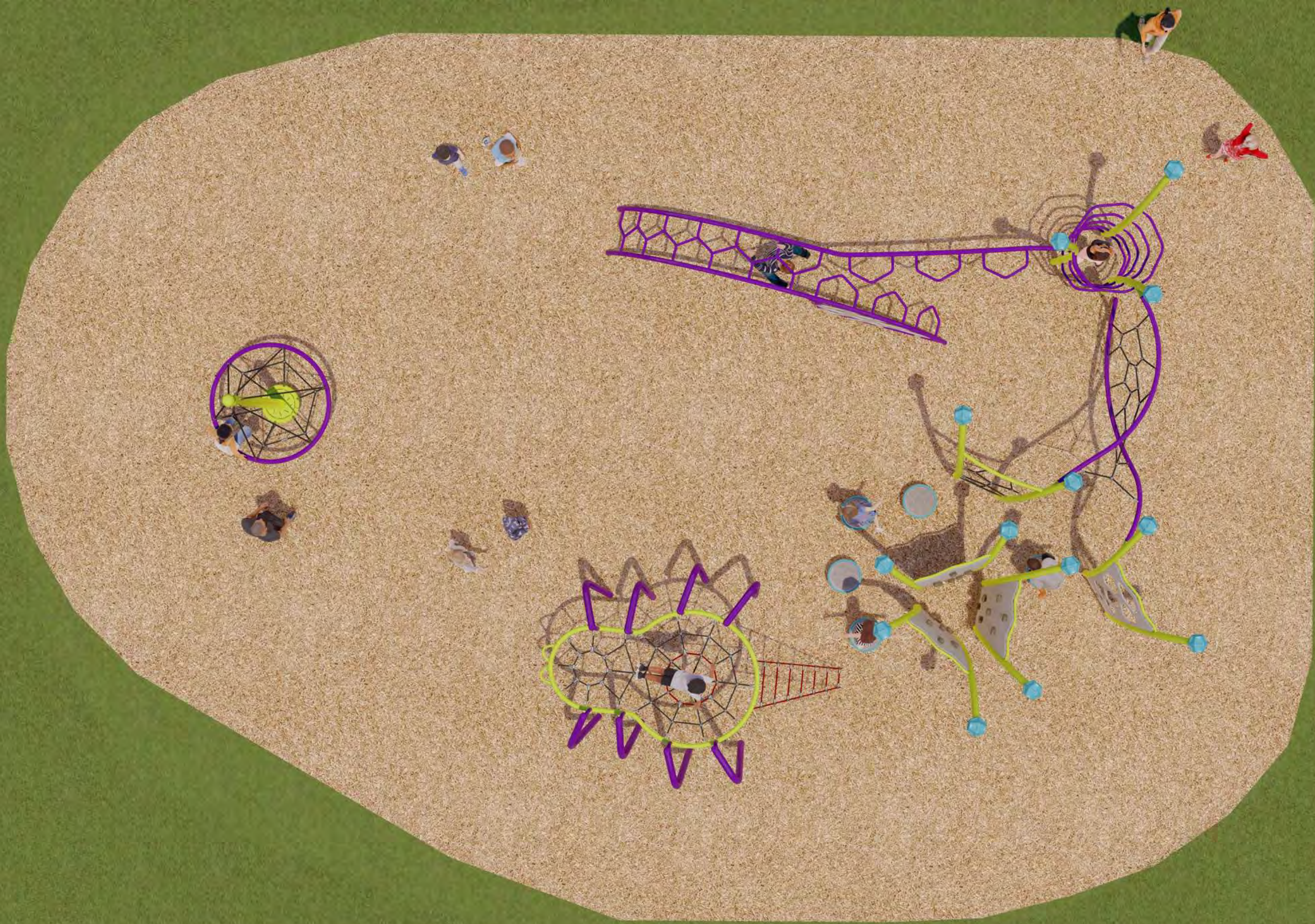
800.438-2780 - www.cunninghamrec.com



1

Frederick County (VA) Parks - Sherando Park - Abex Play Area
Proposed Play Area (Option-1) for Ages 2-5 & Up: View-2





800.438-2780 - www.cunninghamrec.com



2

Frederick County (VA) Parks - Sherando Park - Abex Play Area
Proposed Play Area (Option-2) for Ages 2-5 & Up: View-3





800.438-2780 - www.cunninghamrec.com



2

Frederick County (VA) Parks - Sherando Park - Abex Play Area
Proposed Play Area (Option-2) for Ages 2-5 & Up: View-1





800.438-2780 - www.cunninghamrec.com



2

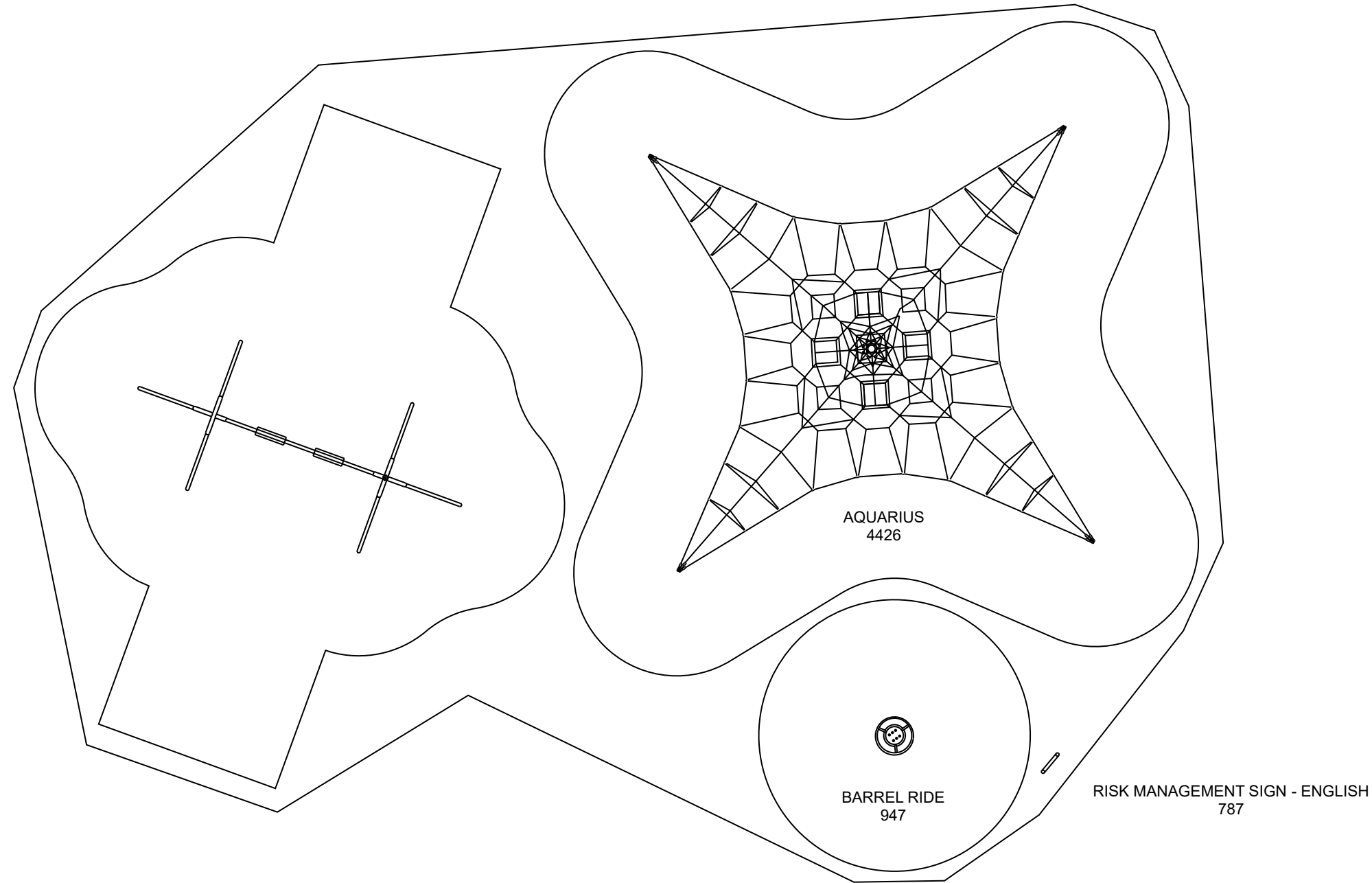
Frederick County (VA) Parks - Sherando Park - Abex Play Area
Proposed Play Area (Option-2) for Ages 2-5 & Up: View-2



Sherando Park - Proposal A

Stephens City, VA

AGE GROUP:	5-12	FOR KIDS AGES	5-12
ELEVATED PLAY ACTIVITIES - TOTAL:	0	REQ'D	0
ELEVATED PLAY ACTIVITIES ACCESSIBLE BY TRANSFER:	0	REQ'D	0
ELEVATED PLAY ACTIVITIES ACCESSIBLE BY RAMP:	3	REQ'D	0
GROUND LEVEL ACTIVITY TYPE:	4	REQ'D	0
GROUND LEVEL QUANTITY:	4	REQ'D	0



To verify product certification, visit www.ipema.org

A



Site Concepts L.L.C.	
PO Box 235 Crozet, VA	PHONE NO: (434) 823-2745 FAX NO: (434) 823-2749
GROUND SPACE: 60'-0" x 39'-6"	
PROTECTIVE AREA: 71'-0" x 52'-0"	
DRAWN BY: George Novey	DATE: 2/22/2023

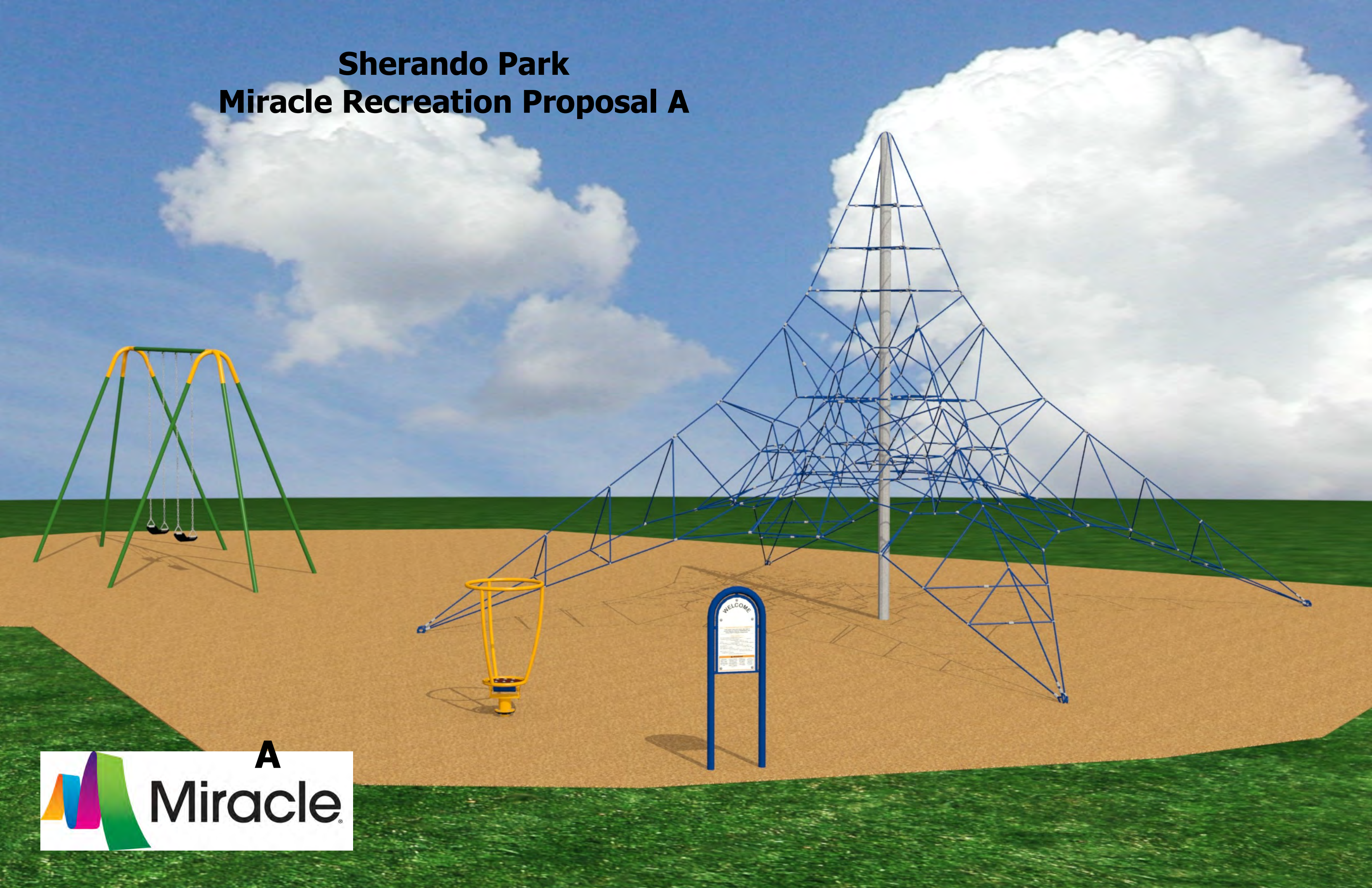
R0098_44979417879	
✓	COMPLIES TO ASTM/CPSC
✓	COMPLIES TO ADA

To promote safe and proper equipment use by children. Miracle recommends the installation of either a Miracle safety sign or other appropriate safety signage near each playsystem's main entry point(s) to inform parents and supervisors of the age appropriateness of the playsystem and general rules for safe play.

THE PLAY COMPONENTS IDENTIFIED IN THIS PLAN ARE IPEMA CERTIFIED. THE USE AND LAYOUT OF THESE COMPONENTS CONFORM TO THE REQUIREMENTS OF ASTM F1487.

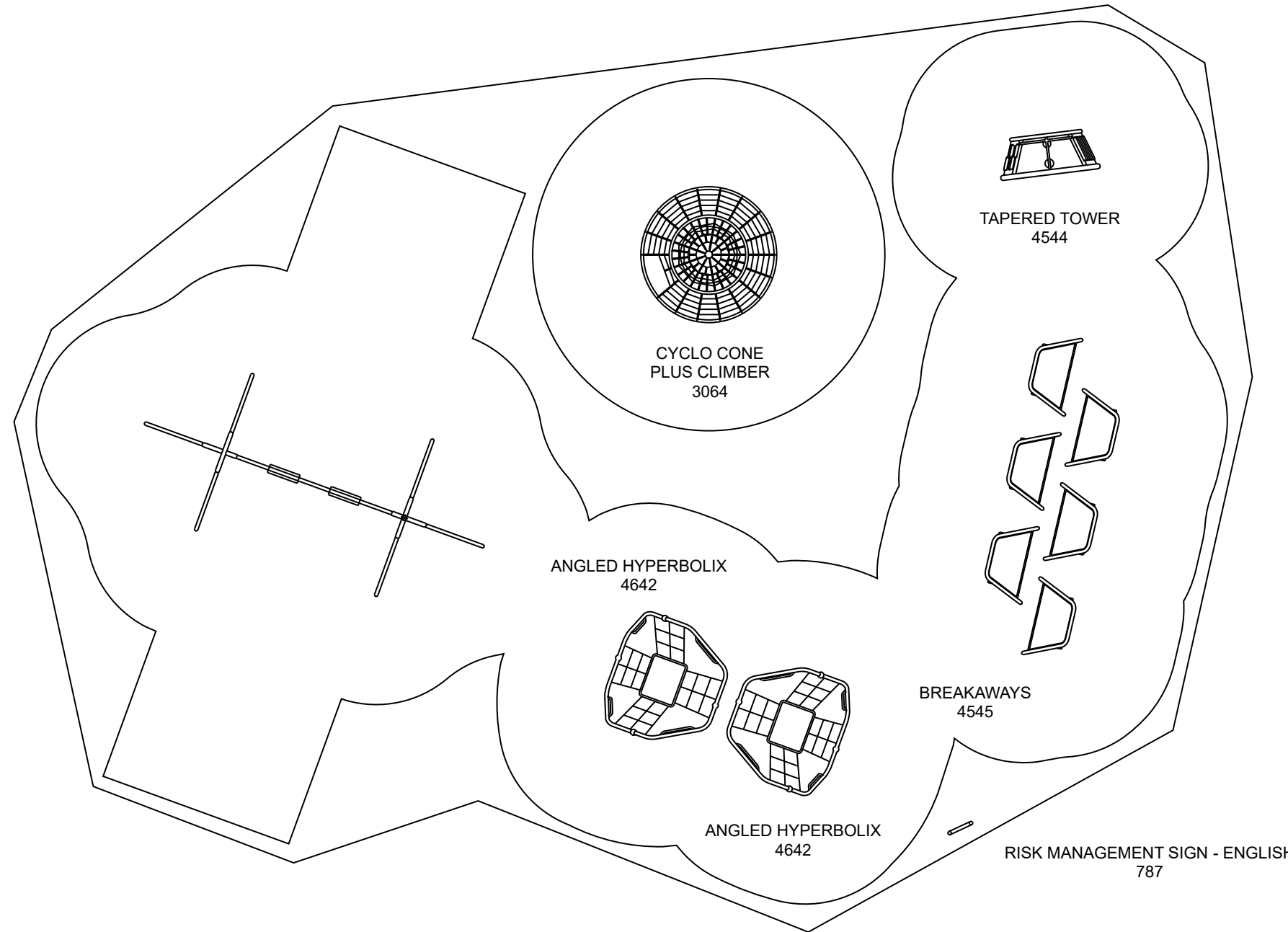
AN ENERGY ABSORBING PROTECTIVE SURFACE IS REQUIRED UNDER & AROUND ALL PLAY SYSTEMS

Sherando Park Miracle Recreation Proposal A



Sherando Park - Proposal B Stephens City, VA

AGE GROUP:	5-12	FOR KIDS AGES	5-12
ELEVATED PLAY ACTIVITIES - TOTAL:	0	REQ'D	0
ELEVATED PLAY ACTIVITIES ACCESSIBLE BY TRANSFER:	0	REQ'D	0
ELEVATED PLAY ACTIVITIES ACCESSIBLE BY RAMP:	3	REQ'D	0
GROUND LEVEL ACTIVITY TYPE:	3	REQ'D	0
GROUND LEVEL QUANTITY:	8	REQ'D	0



B

Site Concepts L.L.C.
 PO Box 235
 Crozet, VA
 PHONE NO: (434) 823-2745
 FAX NO: (434) 823-2749
 GROUND SPACE: 59'-0" x 41'-0"
 PROTECTIVE AREA: 69'-0" x 51'-6"
 DRAWN BY: George Novey
 DATE: 2/22/2023

R0098_44979459443	
<input checked="" type="checkbox"/>	COMPLIES TO ASTM/CPSC
<input checked="" type="checkbox"/>	COMPLIES TO ADA

To promote safe and proper equipment use by children. Miracle recommends the installation of either a Miracle safety sign or other appropriate safety signage near each playsystem's main entry point(s) to inform parents and supervisors of the age appropriateness of the playsystem and general rules for safe play.

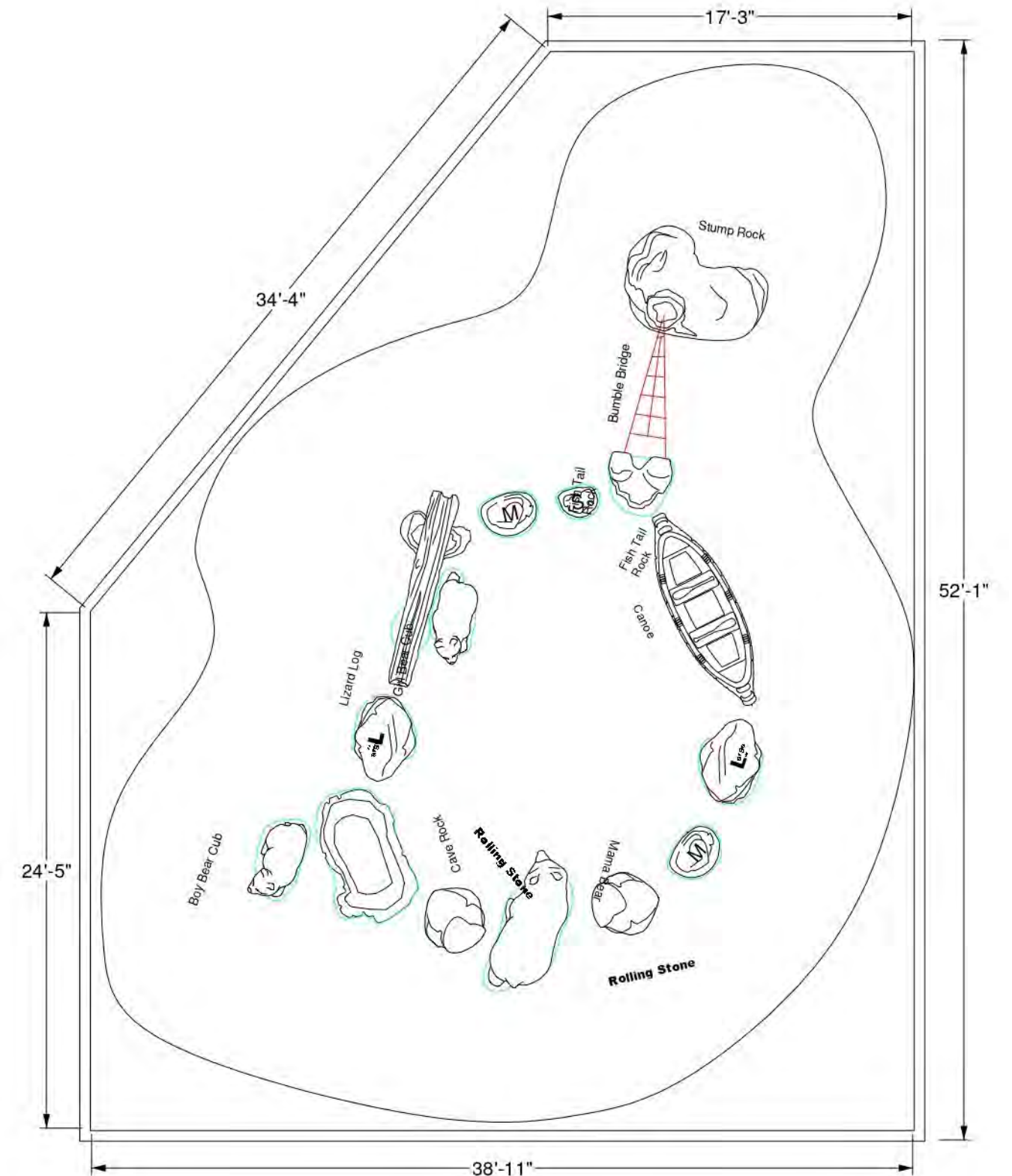
THE PLAY COMPONENTS IDENTIFIED IN THIS PLAN ARE IPEMA CERTIFIED. THE USE AND LAYOUT OF THESE COMPONENTS CONFORM TO THE REQUIREMENTS OF ASTM F1487.

AN ENERGY ABSORBING PROTECTIVE SURFACE IS REQUIRED UNDER & AROUND ALL PLAY SYSTEMS

Sherando Park Miracle Recreation Proposal B



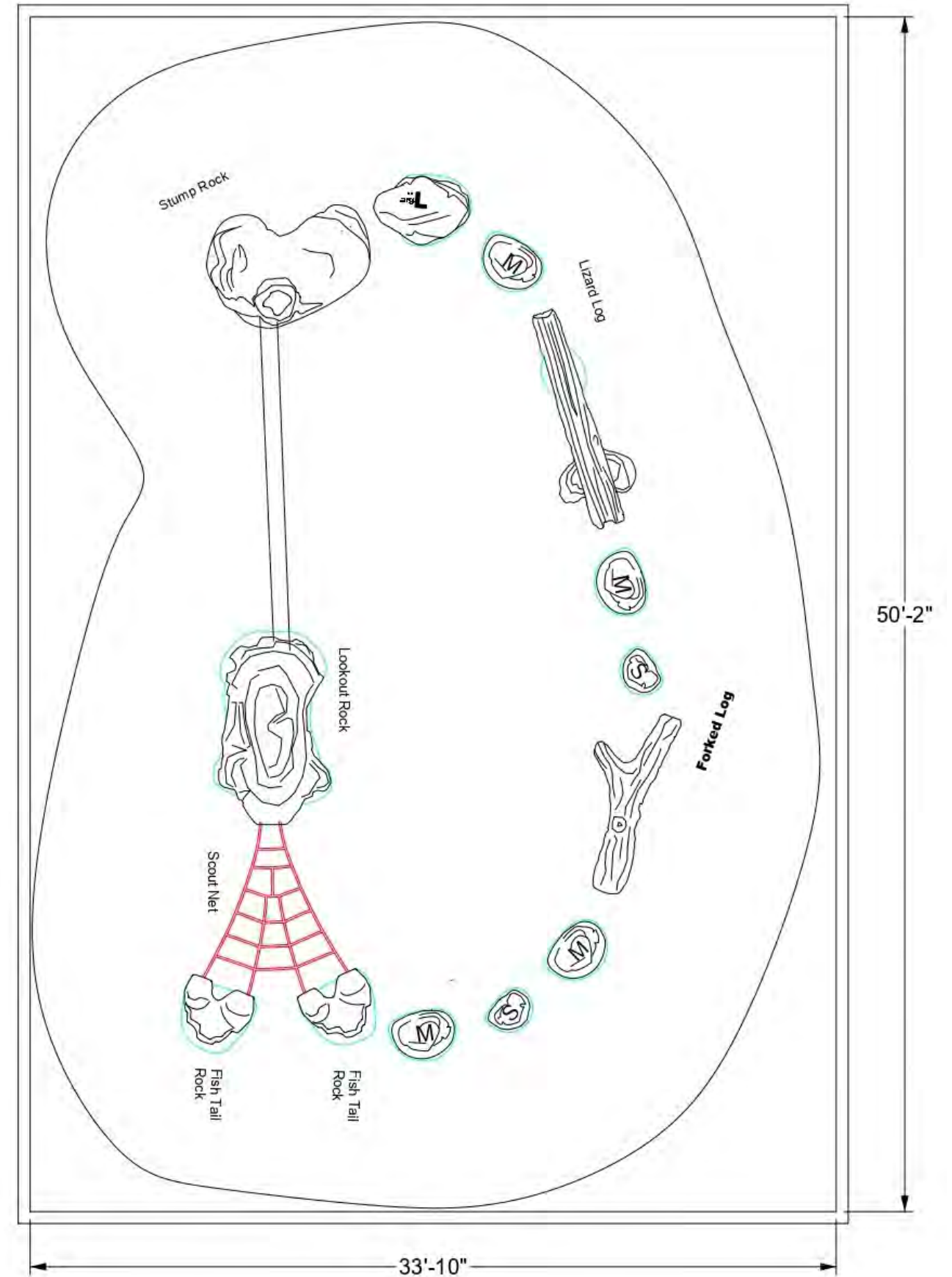
Sherando Park - UPC Parks Proposal C



Sherando Park - UPC Parks Proposal C



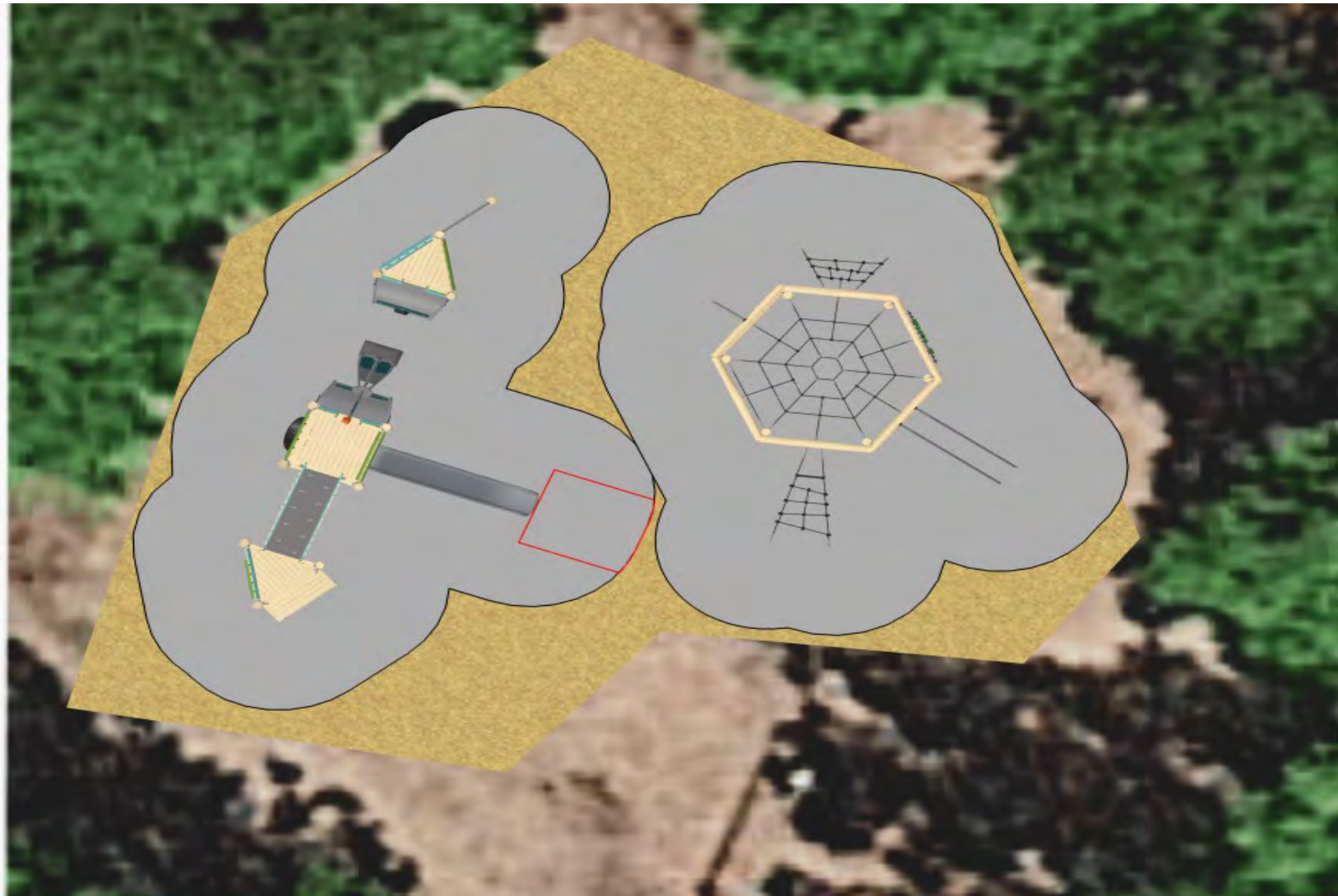
Sherando Park UPC Parks Proposal D



Sherando Park UPC Parks Proposal D



Sherando Abex: Design Layout Overview



KOMPAN 1

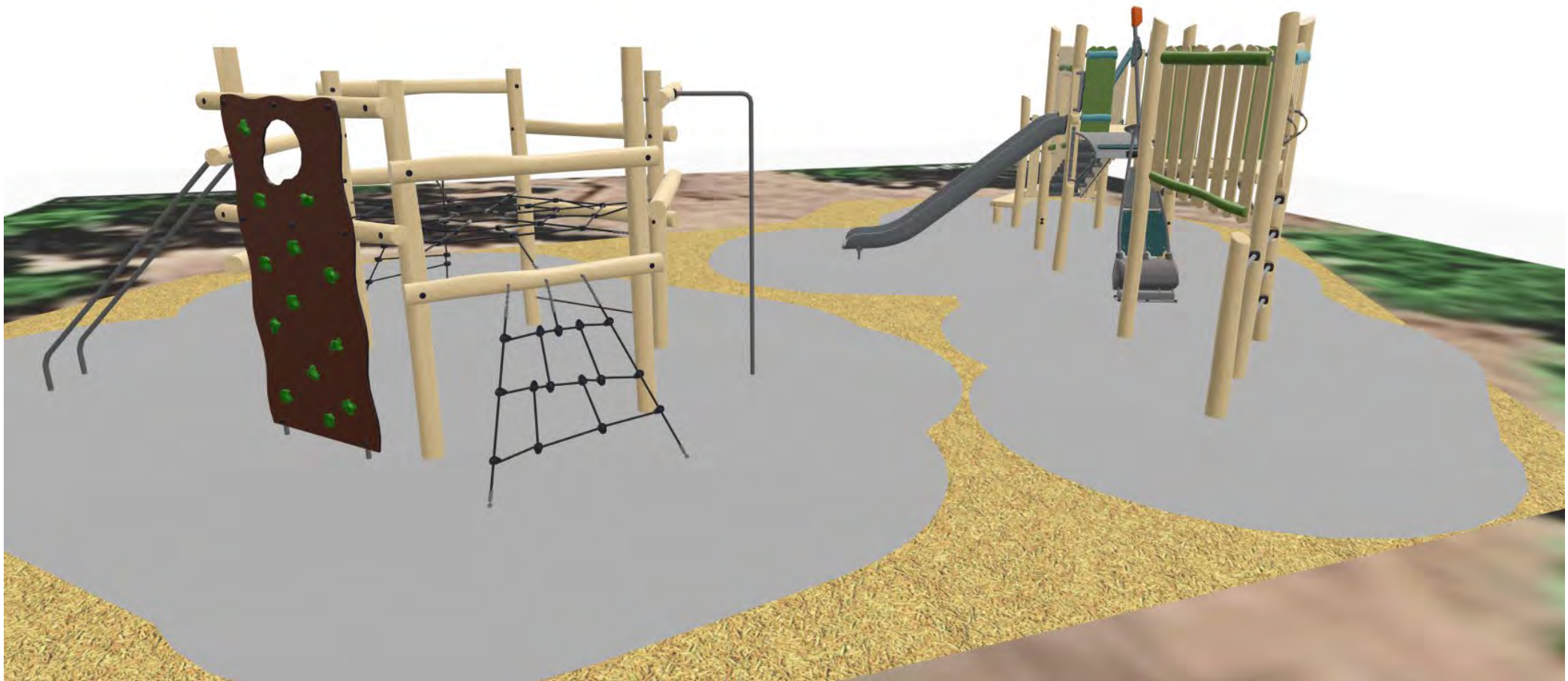
KOMPAN 1



KOMPAN 1



KOMPAN 1



KOMPAN 1



KOMPAN 1



KOMPAN 2



KOMPAN 2



KOMPAN 2



KOMPAN 2



KOMPAN 2

