



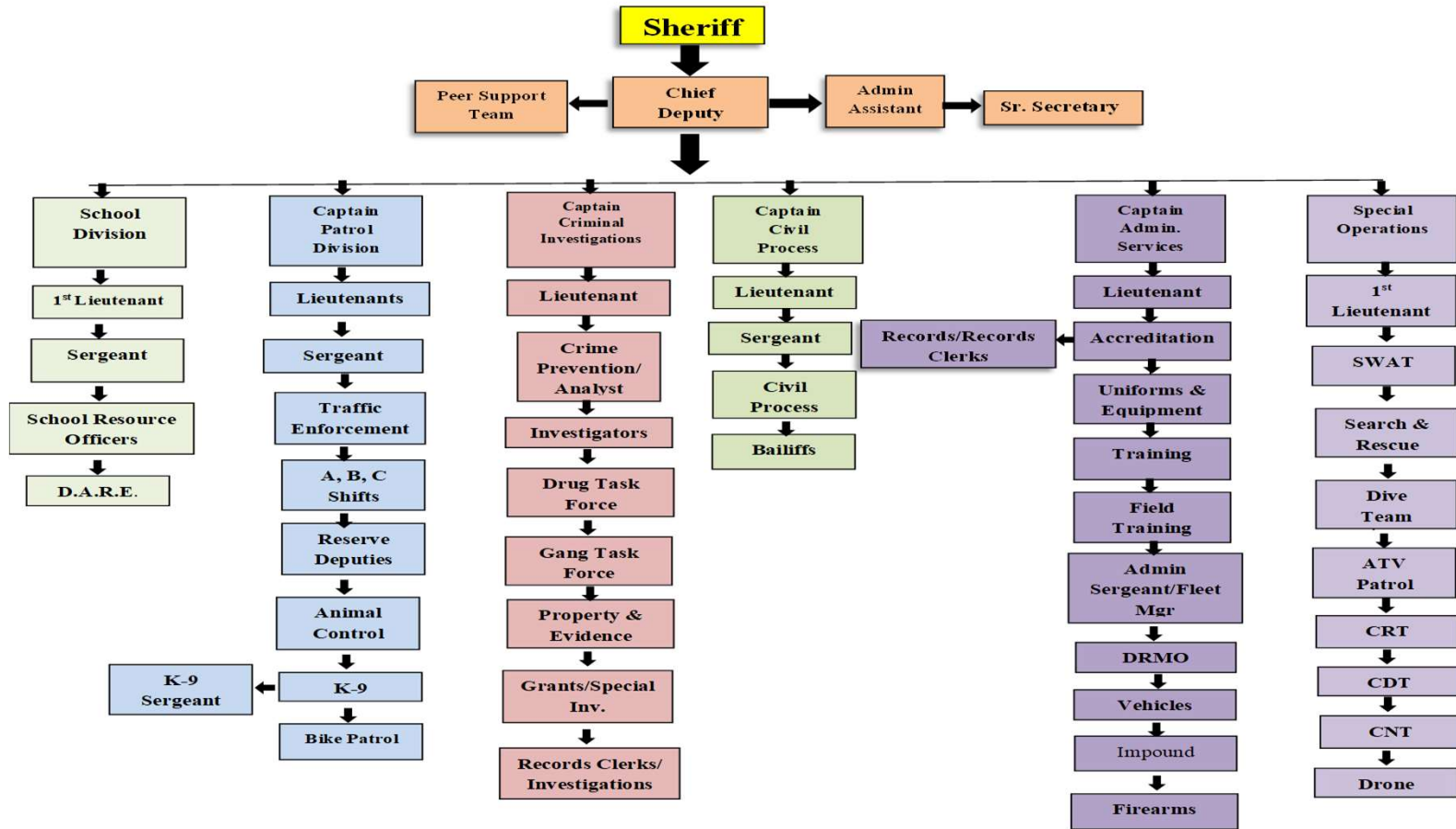
Frederick County Sheriff's Office Budget 2023

Sheriff Lenny Millholland



Organizational Chart (145 Sworn Personnel)

Sheriff's Office





Patrol Division

Total calls for Service in 2022 was 92,148

Captain

- A Shift (6am-4pm): 1-Lieutenant, 2-Sergeants, 17 Deputies, 4 Animal Control Deputies
Average personnel working per day-8

- B Shift (2pm-12am): 1-Lieutenant, 2-Sergeants, 17 Deputies
Average personnel working per day-10

- C Shift (10pm-8am): 1-Lieutenant, 2-Sergeants, 15 Deputies
Average personnel working per day-8

- Traffic Unit (6am-6pm): 1-Lieutenant, 1-Sergeant, 3 Deputies
Average personnel working per day-5



Daily Staffing

Sector 1

A Shift-1 Deputy
B Shift-2 Deputies
C Shift-1 Deputy

Sector 2

A Shift-1 Deputy
B Shift-2 Deputies
C Shift-1 Deputy

Sector 3

A Shift-1 Deputy
B Shift-2 Deputies
C Shift-1 Deputy

Sector 4

A Shift-1 Deputy
B Shift-2 Deputies
C Shift-1 Deputy

Backup North

A Shift-1 Deputy
C Shift-1 Deputy

Backup South

A Shift-1 Deputy
C Shift-1 Deputy

Backup

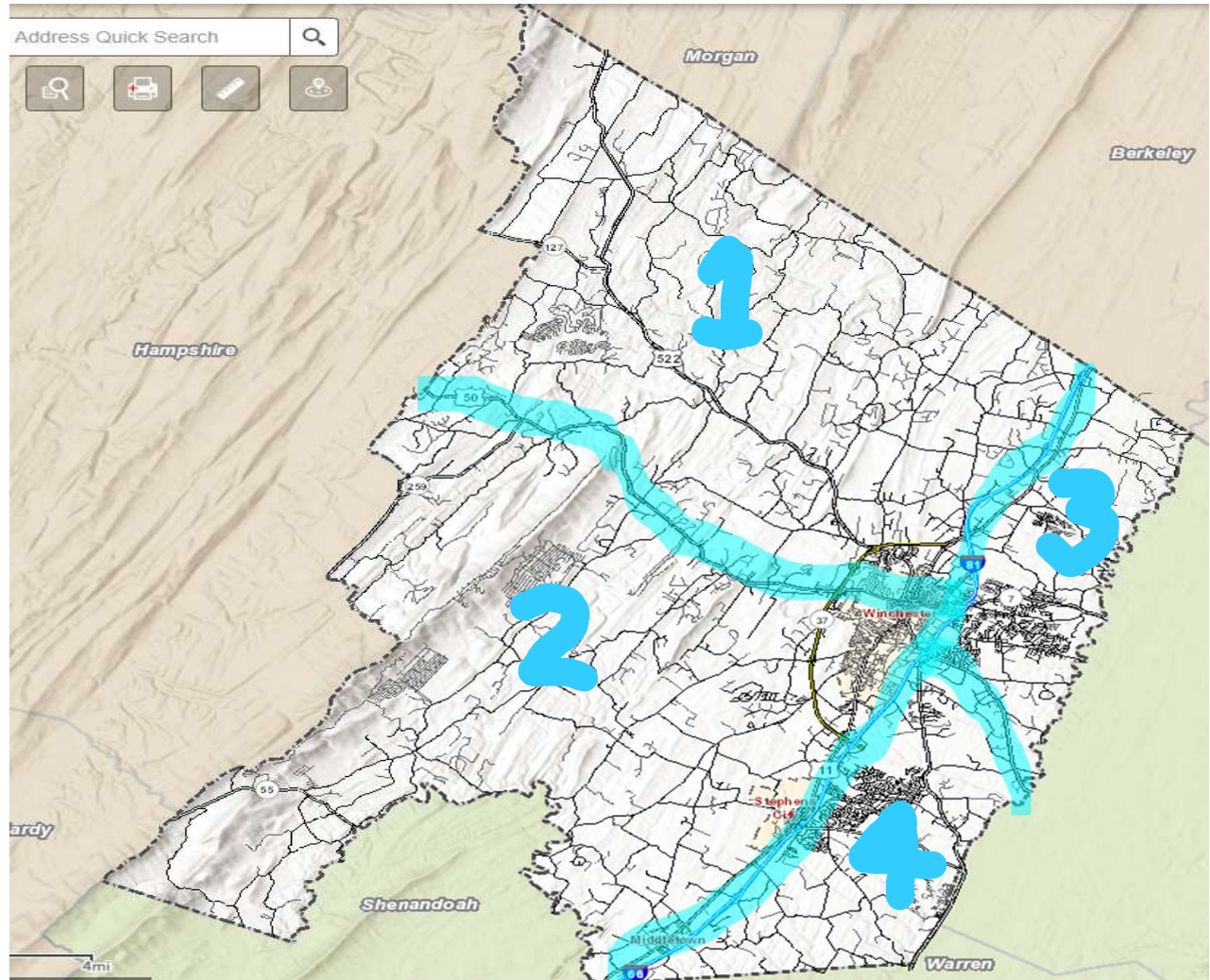
A Shift-1 Deputy
B Shift-1 Deputy
C Shift-1 Deputy

Supervisor

Lieutenant
Sergeant
Lieutenant /Sergeant
Sergeant/Sergeant

Traffic

Lieutenant/Sergeant
3-Deputies





Criminal Investigations Division

The industry standard for criminal cases assigned to one investigator is 6-8 cases per month or 72-96 cases per year.

1-Captain

2-Lieutenants

21-Investigators

1-Forensic Computer Investigator

1-ICAC Investigator

1-Cell Phone/Social Media Investigator

1-Adult Protection Investigator (DSS)

1-Child Protection Investigator (DSS)

2-Forensic Science Graduate Crime Scene Investigators

1-Financial Crimes Investigator/Polygraph Examiner

2-DEA Drug Task Force Investigators

4-State Police Drug Task Force Investigators

1-FBI Human Trafficking Task Force Investigator

1-Polygraph Examiner

3-General Investigators

1-Deputy-Property/Evidence Custodian, Log in/out property/evidence, dispose of unneeded property/evidence, take/retrieve evidence to/from Northern Virginia Lab.



Civil Division

Personnel

- 1-Captain
- 1- Lieutenant
- 1-Sergeant
- 13-Deputies
- 5-Part-Time Deputies

Functions

- Prisoner Transport from/to Juvenile Detention Center-daily
- Prisoner Pick-up (In State/Nationwide) as needed-2 Deputies per transport
- Bailiff for all Courts/fingerprint-average 10 Deputies daily
- Serve Civil Papers-average 4 Deputies daily
- Transport Temporary Detention Order Subjects as needed-average 1 per week-2 Deputies per transport



Administrative Division

Personnel

- 1-Captain
- 1-Lieutenant
- 2-Sergeants
- 1-Deputy

Functions

- Accreditation (191 Standards/958 Proofs)
- Departmental Training/Records (40 Hours Every 2 Years)
- Academy/Field Training (New Recruits-19 weeks in Academy 3 months field training)
- Recruiting/Hiring
- Budget
- Fleet Purchasing/Management
- DRMO/1033 Program (Over 4 Million Dollars to Date)
- Community Policing (Neighborhood Watch, NNO, Triad, Special Events, CCW Training, etc.)
- Uniform/Equipment Purchase/Assignment
- Firearms Training (Twice Annually)
- Surplus Property Sales
- Impound Lot/Range Maintenance
- Fugitive/Gang Unit
- Project Lifesaver
- FOIA Officer
- Asset Forfeiture



Special Operation Division

Personel

- 1-1st Lieutenant
- 4-Deputies

Function

- Community Response Team-Assist Parole/Probation, DTF, Special Investigations/Directed Patrol

Specialty Teams (Personnel From all Divisions)

<u>Specialty Teams (Personnel From all Divisions)</u>	<u># Deputies on Team</u>	<u>Training (*After Certification)</u>
▪ SWAT Team-High Risk Situations (Search Warrants, Barricaded Subjects, etc.)	16 Deputies	*16 hrs month/1 week year
▪ Search & Rescue Team-Lost/Missing People, Evidence Searches	25 Deputies	*8 hrs month
▪ Underwater Search & Recovery Team-Body/Evidence Recovery	12 Deputies	*16 hrs month (No Winter)/1 week year
▪ Civil Disturbance Unit-Respond to Protests/Civil Disturbances	20 Deputies	8 hrs twice year
▪ Crisis Negotiation Team-Negotiate with barricade subjects	11 Deputies	*4 hrs month
▪ Honor Guard-Funerals, Parades, Special Events	10 Deputies	8 hrs month
▪ Drone Team-Crime Scenes, Vehicle Crashes, Search & Rescue, Etc.	10 Deputies	*8 hrs month



School Division

Personnel

1st Lieutenant

1-Sergeant

19-Deputies

1-D.A.R.E. Deputy

1-Deputy per school



Take Home Vehicle

Reasons to Keep Take Home Vehicles

- 1-Deputies are subject to being called out.
- 2-Deputies on Specialty Teams are subject to being called out.
- 3-Retention-most Law Enforcement agencies in area offer them to officers/deputies
- 4-Recruitment-entice people to work for Frederick County (VRS retirement benefits has been reduced/Negative publicity for Law Enforcement)
- 5-Deputies are on duty to and from their residence and they respond to calls for service, stop traffic violators, deter traffic violations and criminal activities.
- 6-Sheriff's Office vehicles parked in neighborhoods deter traffic violators and criminal activities



Compensation Board

The Compensation Board computes the funding for Sheriff's Office's from an antiquated formula of 1 deputy per 1500 population. This formula does not provide adequate funds to provide acceptable service to the citizens of the locality. The Compensation Board fell behind in funding the one deputy per 1500 population in 2008.



Traffic Statistics

	2022				2023		
	Summons	Warnings	FR300	Fatal	Summons	Warnings	FR300
Traffic	2568	1543	304	5	112	105	17
Patrol	2272	659	198	0	280	90	18
TOTAL	4840	2202	502	5	392	195	35



Salary

Salary for Deputy Sheriff

Deputy I (New Hire) \$47,355

Deputy II (After Two Years) \$49,723

Deputy III (After Four Years) \$52,209