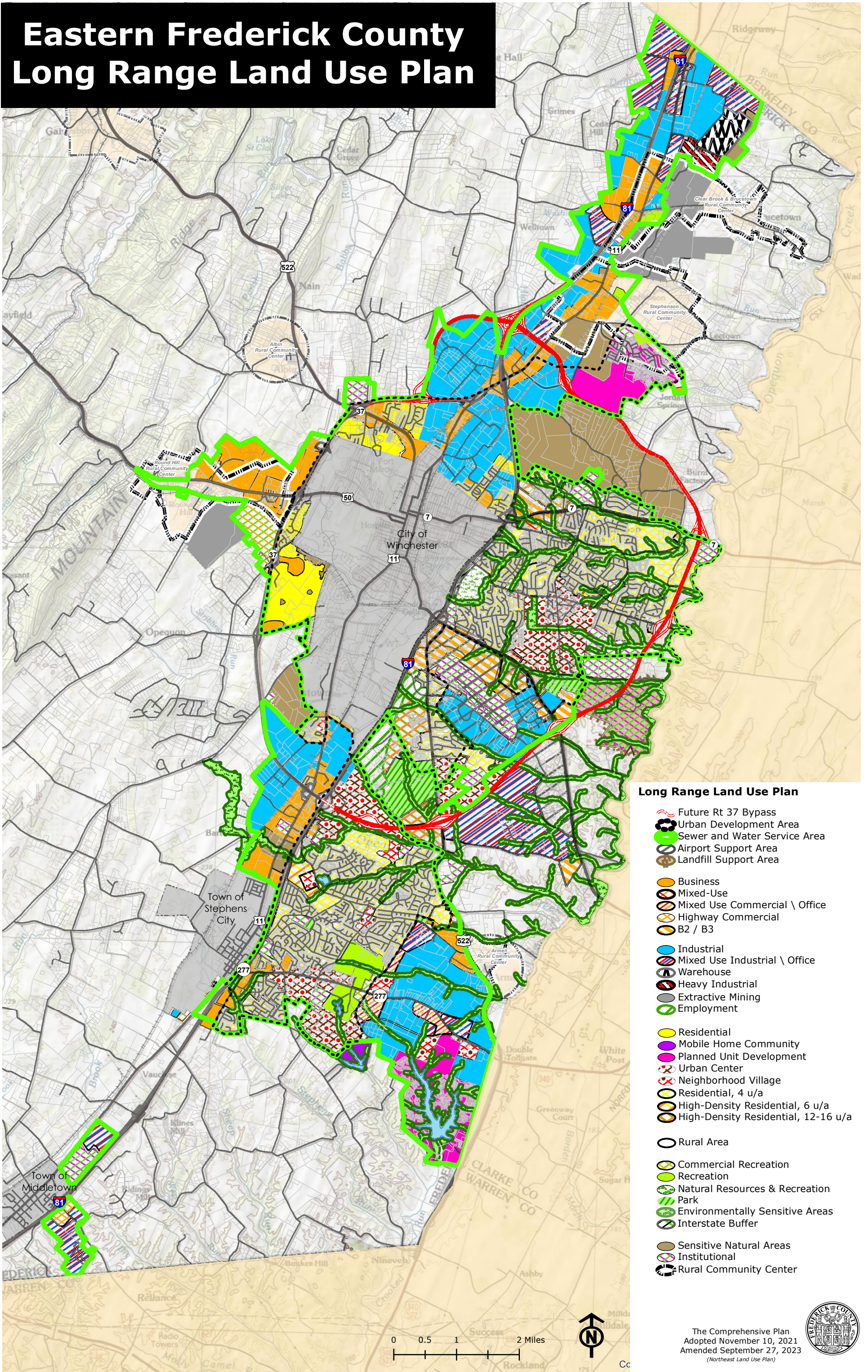


Eastern Frederick County Long Range Land Use Plan



Long Range Land Use Plan

- Future Rt 37 Bypass
- Urban Development Area
- Sewer and Water Service Area
- Airport Support Area
- Landfill Support Area
- Business
- Mixed-Use
- Mixed Use Commercial \ Office
- Highway Commercial
- B2 / B3
- Industrial
- Mixed Use Industrial \ Office
- Warehouse
- Heavy Industrial
- Extractive Mining
- Employment
- Residential
- Mobile Home Community
- Planned Unit Development
- Urban Center
- Neighborhood Village
- Residential, 4 u/a
- High-Density Residential, 6 u/a
- High-Density Residential, 12-16 u/a
- Rural Area
- Commercial Recreation
- Recreation
- Natural Resources & Recreation
- Park
- Environmentally Sensitive Areas
- Interstate Buffer
- Sensitive Natural Areas
- Institutional
- Rural Community Center

0 0.5 1 2 Miles



The Comprehensive Plan
Adopted November 10, 2021
Amended September 27, 2023
(Northeast Land Use Plan)

